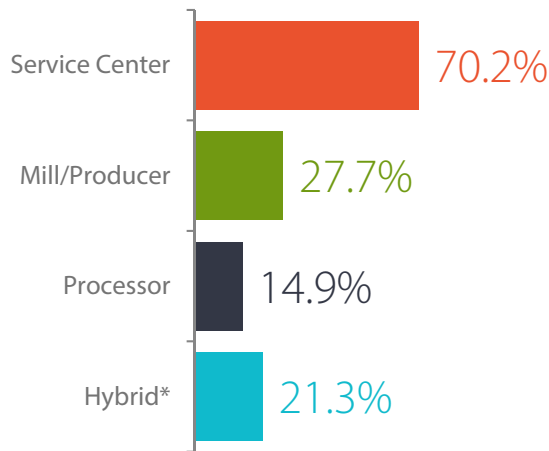


Executive Summary

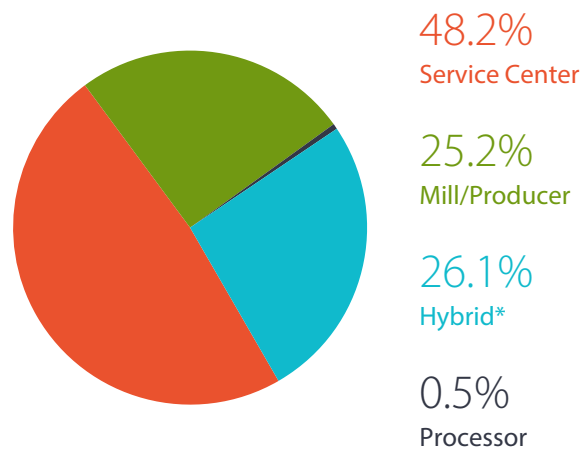
Respondent Profile

The following charts are shown to help users of the report better identify with the participating firms

Company Type by % of Respondents



Company Type by % of Man Hours

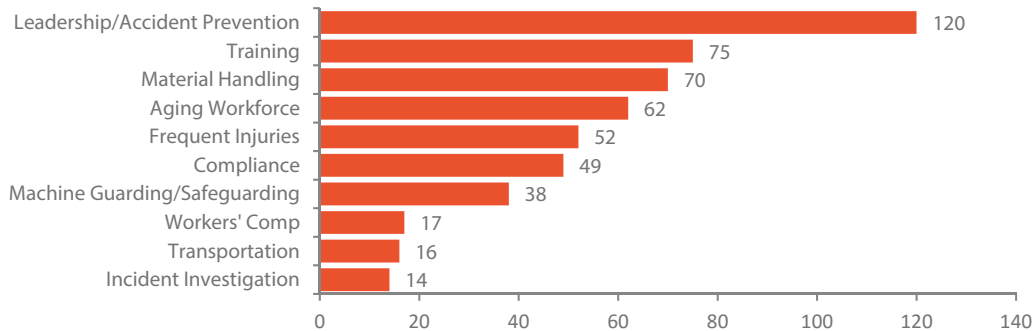


*Some responding companies are comprised of entities that are classified as more than one type of company as described in this survey.

Top Safety Issues

Survey respondents were asked to rank their top 3 safety issues. Based on the responses, a ranking or "score" was arrived at for the top three safety issues. This "score" takes into account the frequency with which the issue was indicated as one of the top three safety issues and also weights the importance each issue was given. For instance, each time a safety issue was ranked as the number one safety issue it was scored a five (5),

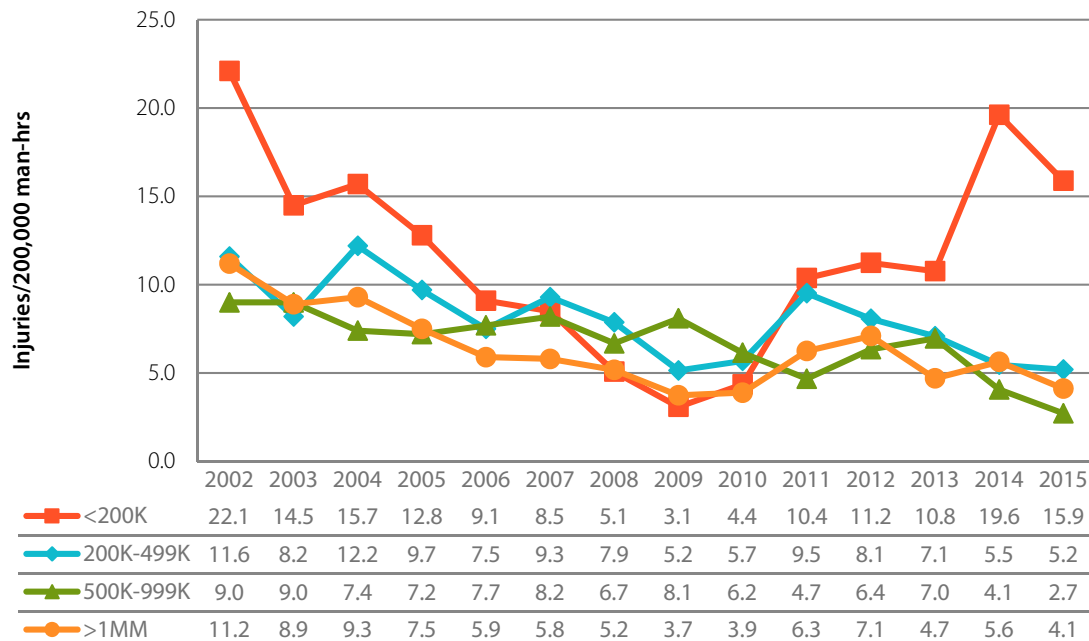
second most important received a four (4), and third most important received a three (3). Using this methodology, "Leadership/Accident Prevention" was the overwhelming top safety issue for the sixth consecutive year. "Aging workforce" was fourth, which is the highest level it's been over the last six years. Listed below are the results of the rankings:



Safety Data

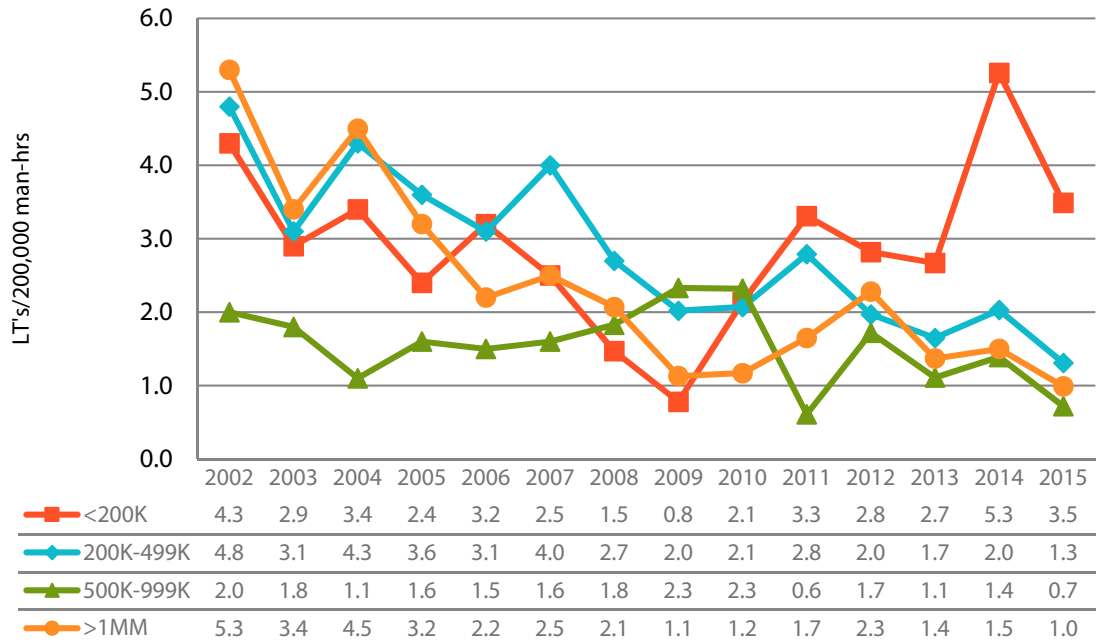
The sample for the survey conducted in 2016 is based on 2015 and 2014 data and is different than the respondent sample for the 2002-2013 data. For this reason, please use caution when drawing conclusions from the trends in the data from year to year.

Recordable Incidence Rate*

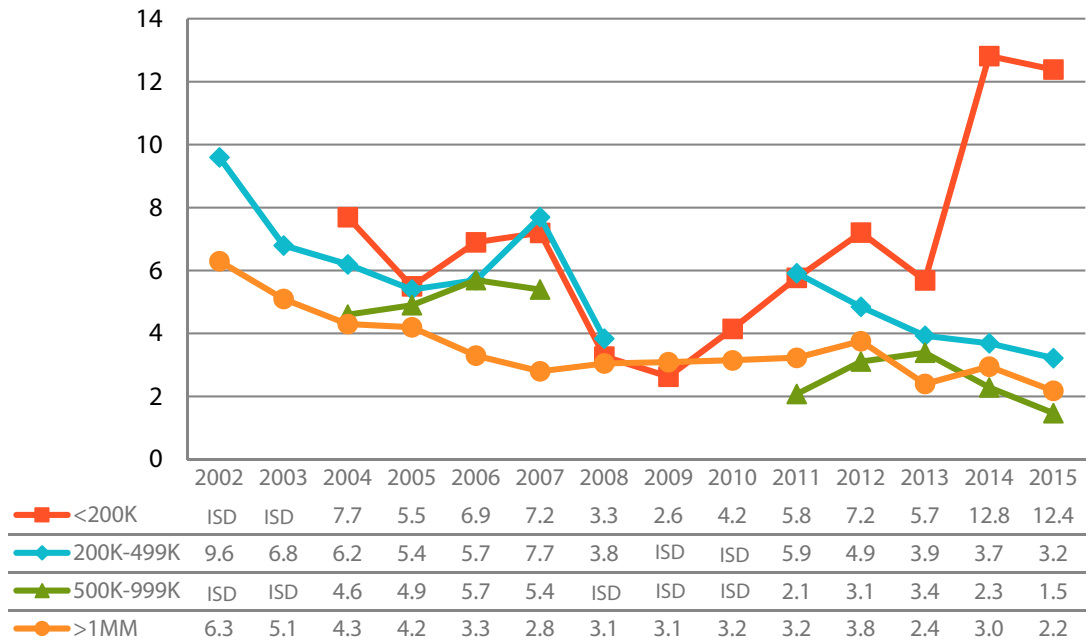


*The sample for the survey conducted in 2016 is based on 2015 and 2014 data and is different than the respondent sample for the 2002-2013 data. For this reason, please use caution when drawing conclusions from the trends in the data from year to year.

Lost Time Rate*



Dart Rate*



*The sample for the survey conducted in 2016 is based on 2015 and 2014 data and is different than the respondent sample for the 2002-2013 data. For this reason, please use caution when drawing conclusions from the trends in the data from year to year.

Supplemental Canadian Safety Data

At the request of several Canadian MSCI members, the MSCI Safety Survey Report again collected additional safety data this year that typically have been tracked primarily by Canadian firms. More firms are beginning to report and track these

measures, giving us a sufficient sample to report these ratios by company type and number of man hours in the Detailed Results section of this report. The data below are aggregated by all respondents that provided this information.

	2015	2014
Medical Aid Case Rate		
Number of Responses	33	30
Median	2.62	2.68
Average	5.41	7.53
First Aid Case Rate		
Number of Responses	34	32
Median	4.31	3.77
Average	7.04	7.68
Reports Only Rate		
Number of Responses	30	27
Median	0.00	1.38
Average	3.87	4.60
Incident Report Rate		
Number of Responses	35	32
Median	2.93	3.84
Average	15.48	13.91

*The rates above are calculated on the basis of 200,000 man hours. Definitions for the categories are listed below:

- First Aid Cases:** anything done in house to assist an employee injured in the workplace such as minor cuts or bruises not requiring outside medical attention.
- Reports Only:** an incident or report of pain not requiring medical of first aid such as an employee reporting elbow pain while performing work.
- Incident Reports:** an incident resulting in property damage or the environment or a near miss that could have resulted in injury.